



# Ashtree Primary School & Nursery



Chertsey Rise, Stevenage, Herts SG2 9JQ

Tel: 01438 351090 Fax: 01438 353464

Email: [admin@ashtree.herts.sch.uk](mailto:admin@ashtree.herts.sch.uk)

 Facebook: Ashtree Primary School Nursery

 Twitter: @AshtreeSchool

Headteacher: Mrs M. Janes

Deputy Headteacher: Ms P. Ruprai

## NEWSLETTER 11

DATE 24 November 2022

Dear Parents & Carers,

This week has been another music filled week. The violin lessons are going really well and Mrs Dunlop is busy preparing something to show in a future newsletter and on social media. Miss Hembra was very excited on Wednesday when the glockenspiels arrived, she secured funding for these and has plans for how they will be used over the next few weeks.

We are busy practicing songs for the concert on 14 December, where each year group have their own songs to perform to you all.

Ms Ruprai, Mr Yates and I have been visiting classrooms to look at the classroom environment. Staff really have excelled themselves with some of the displays and working areas, EYFS have been painting and sticking onto the display boards to create calming but focussed areas for learning everything from phonics, to Maths to art areas. Year 1 have carried that theme on with easy to access resources around the room which encourage independence. As you move through the school the children in KS1 and KS2 are keen to explain and show us what they are learning and how the displays around the room help them. The staff are really looking at ways to make the children feel comfortable and a part of the learning journey.

I even had one child from Reception join me when I was showing a new parent around, very keen to explain everything in the classroom and show the visitor how it all worked. I really couldn't have asked for a better example as to why the parent should send their child to Ashtree.

Our front gates are working again and we are able to keep them closed at the busy points of the day to protect the children and parents as they walk into school. I do need to remind you all that if you are driving onto the school site that you need to keep your speed as low as possible and to remember that people are crossing onto the playground at KS2 and into the bike sheds. Those parents who walk into school or send their children to walk in, please just remind them to look before they cross the drive and when around the parking spaces.

A reminder that the school is closed to children on Friday, the staff will be having a training day. During the day we will be looking at the Ofsted improvement points from a year ago and seeing how far we have come and what our next steps are.

One thing that we needed to look at was our phonics scheme and the reading books that we were giving children. We started this time last year by fundraising so that we could buy a new phonics scheme - Little Wandle. Then training took place across the school so that staff were able to deliver the slightly different ways of presenting and teaching the phonics. We raised money for books with help from the PTA, Ms Ruprai securing grants and my bungee jump which were used to purchase books that fitted with the scheme. We now have books in EYFS, Y1 and Y2, the Y3 and 4 books are on their way and the PTA have plans for funding to buy books into Y5 and 6. When subject leaders and senior leaders have listened to children read it is clear that they are able to read and work out the words to understand the book. Teachers are teaching daily phonics and catch up sessions with some after school sessions in KS1.

We were also asked to look at our curriculum to make sure that it supported teachers to be able to teach the knowledge and skills that the National Curriculum and Early Years Curriculum sets out. That the curriculum was ambitious for all children and moved in a well-planned way from Nursery through to Y6. Over the last year the subject leaders and the Early Years Lead have rewritten our whole curriculum for all subjects. Many of the subjects are being taught at the moment and the last few will begin next term. The children are able to talk confidently about what they have learnt and about the things that have helped them to remember their learning.



# Ashtree Primary School & Nursery



Chertsey Rise, Stevenage, Herts SG2 9JQ

Tel: 01438 351090 Fax: 01438 353464

Email: [admin@ashtree.herts.sch.uk](mailto:admin@ashtree.herts.sch.uk)

Facebook: Ashtree Primary School Nursery

 Twitter: @AshtreeSchool

Headteacher: Mrs M. Janes

Deputy Headteacher: Ms P. Ruprai

Ofsted are due to come back again soon to do a monitoring visit, one where they look at the progress that we have made and where we need to go next. I know that when they talk to staff and pupils they will see just how hard everyone has worked over the last year and that we are well on our journey to our next graded inspection in a year's time.

Finally, the Nursery and Reception held a very successful open evening for potential new parents. The new preschool, Sunbeams, were there to talk about the preschool provision coming soon, Herts Catering were there talking about our meals and about universal free school meals for Reception to Y2. The PTA were there to talk about all of the things that they do to support the school and maybe find a few future members. Well done to the Early Years staff for an enjoyable evening.

Mrs Janes  
Headteacher

## **Bedwell v Ashtree Mixed League Match 22.11.22**

Our Mixed League team played their second game of the season, away at Bedwell. It had felt like a long time since this squad had played and it was good to see them in action again. This was an extremely close game with each quarter ending in a draw or with a one goal difference. Unfortunately, we lost the match with a score of 8 – 7 at the final whistle.

Our captain for this game was Charlie, who not only played with a constant enthusiasm and energy, but whose positivity boosted all players on the court, not just the Ashtree team. The player of the match, as chosen by the Bedwell team, was Kirsty, for her movement around court, which created many opportunities for Ashtree to gain possession and to channel the ball to our goal. Our coach's player of the match, as chosen by Ms Cook, was Ben. This was Ben's first experience of a league netball match, and he showed good focus and great attention to the coaching advice he was being given during the game. He made some important interceptions for us and helped to keep this game as close as it was. Well done Kirsty and Ben.

This was our last match before the Christmas holidays, and matches will not resume until at least February. Training sessions will continue to be on Fridays, after school.



**Oliver Y5.** Elena from Y6 inspired me to try to make some origami for myself. I was going to make an eagle but it didn't come out right, so I made a dragon instead. Once I had made that, I fixed it in place with glue.

**BeeZee Bodies are now advertising their new parent courses for January 2023**

[https://beezeebodies.com/for-families/?utm\\_source=parent-mail&utm\\_medium=email&utm\\_campaign=November22](https://beezeebodies.com/for-families/?utm_source=parent-mail&utm_medium=email&utm_campaign=November22)



# Ashtree Primary School & Nursery



Chertsey Rise, Stevenage, Herts SG2 9JQ

Tel: 01438 351090 Fax: 01438 353464

Email: [admin@ashtree.herts.sch.uk](mailto:admin@ashtree.herts.sch.uk)

Facebook: Ashtree Primary School Nursery

Twitter: @AshtreeSchool

Headteacher: Mrs M. Janes

Deputy Headteacher: Ms P. Ruprai

Monday 28 November	Tuesday 29 November	Wednesday 30 November	Thursday 1 December	Friday 2 December
OCCASIONAL DAY School closed to children	Menu 2			Netball Training Years 5&6 (3.25pm-4.15pm)  Non-Uniform Day
Monday 5 December	Tuesday 6 December	Wednesday 7 December	Thursday 8 December	Friday 9 December
Menu 3				Nasal Flu – 2 <sup>nd</sup> Round
Monday 12 October	Tuesday 13 October	Wednesday 14 October	Thursday 15 October	Friday 16 October
Menu 1		Christmas Concert Christmas Dinner Christmas Jumper Day		Netball Training Years 5&6 (3.25pm-4.15pm)
Monday 19 December	Tuesday 20 December	Wednesday 21 December		
Menu 2		School Finishes at 2.15pm		



## Dinner Behaviour Awards



The winners for this week are **Swifts** (for good behaviour lining up at lunch and in the playground) & **Buzzards** (for listening well and playing nicely during wet play).



## Attendance Cup



The winner for this week is **Wrens** with **94%**.

Eagles	=	93.8%
Kestrels	=	93.4%
Falcons	=	92.4%
Owls	=	91.7%
Magpies	=	91%
Hawks	=	88.8%
Harriers	=	88.1%
Red Kites	=	87.5%
Robins	=	87%
Swifts	=	86.9%
Parrots	=	86.1%
Buzzards	=	85.1%



## Upcoming Events

**25 November & 28 November 2022**  
**School Closed to pupils**

**2 December 2022**  
**Non Uniform Day**

**9 December 2022**  
**Nasal Flu – 2<sup>nd</sup> Round**

**14 December 2022**  
**Christmas Concert**  
**Christmas Dinner**  
**Christmas Jumper Day**

## Lunchtime Superstar Award

Jacob J & Devon  
Owls



# Ashtree Primary School & Nursery



Chertsey Rise, Stevenage, Herts SG2 9JQ

Tel: 01438 351090 Fax: 01438 353464

Email: [admin@ashtree.herts.sch.uk](mailto:admin@ashtree.herts.sch.uk)

Facebook: Ashtree Primary School Nursery

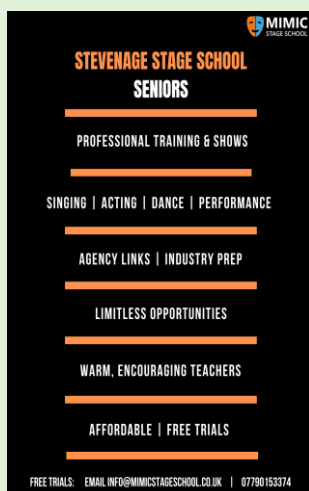
Twitter: @AshtreeSchool

Headteacher: Mrs M. Janes

Deputy Headteacher: Ms P. Ruprai

## Term Dates Academic Year 2022 / 2023

<b>Friday 25 November 2022</b>	-	<b>INSET Day 3</b>	- school closed to children
<b>Monday 28 November 2022</b>	-	<b>Occasional Day</b>	- school closed to children
21 December 2022	-	Last day of term	
22 December 2022 - 4 January 2023	-	Christmas holiday	
Thursday 5 January 2023	-	First day of term for pupils	
13 February 2023 - 17 February 2023	-	Half term holiday	
<b>Monday 20 February 2023</b>	-	<b>INSET Day 4</b>	- school closed to children
3 April 2023 - 14 April 2023	-	Easter holiday	
<b>Friday 26 May 2023</b>	-	<b>INSET Day 5</b>	- school closed to children
29 May 2023 – 2 June 2023	-	Half term holiday	
Friday 21 July 2023	-	Last day of term	
24 July 2023 - 31 August 2023	-	Summer holiday	



**Mimic Stage School** will be running classes at Ashtree please contact them to find out more.